

# All Traffic Solutions

*Safety Made Simple!*



**SPEEDsentry® Shield is the ideal radar speed sign when portability is paramount. You'll get better results because you'll use it more often, in more places.**



**Compact:** Weighing only 15 lbs including battery, you can fit several Shields in the passenger seat and mount them almost anywhere—pole, trailer or vehicle. The entire display fits safely inside a padded carrying bag.

**Extended Battery Life:** Lithium ion batteries provide longer life in a smaller package. Achieve up to two weeks of running time between charges depending on road conditions and sign settings. Choose solar assist or AC supply for more permanent installations.

**Durable & Tamperproof:** The Shield's welded aluminum enclosure, shatterproof shield, impact-absorbing corners and graffiti-resistant powder-coat make it even tougher than our regular SPEEDsentry®. Torx screws prevent unwanted access.

**Simple to Program:** Both the wireless PDA and onboard buttons are easy to understand.



### Basic Button Control

Turn the sign on/off, toggle between "stealth" and "display on" mode and set the speed limit without the need for the PDA.

### Shatterproof 1/4" UV Stabilized Lexan

The flexible, nearly indestructible polycarbonate absorbs energy, reducing the likelihood of damage upon impact.

### High Intensity LEDs

These autodimming 30° LEDs combine with glare-resistant, UV-protected Lexan to increase the contrast and digit visibility.

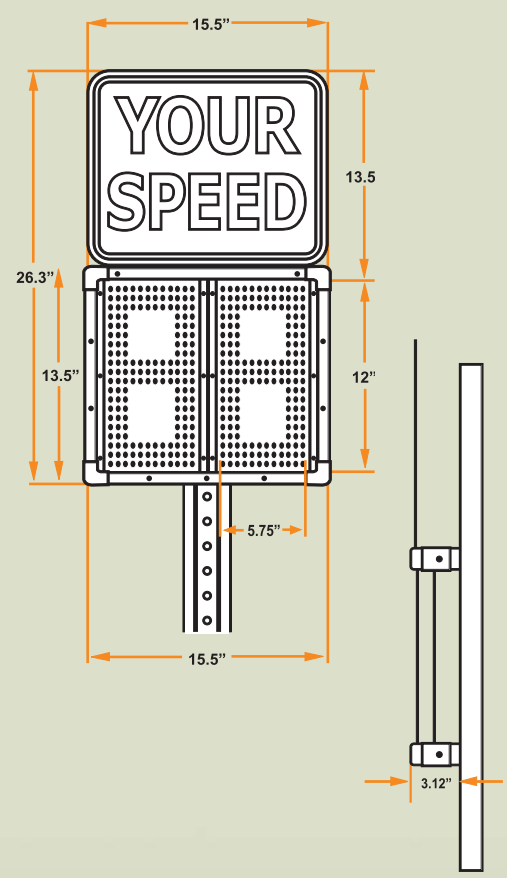
### Curb Appeal

- The thin profile provides an attractive installation without auxiliary enclosures.
- Any additional battery cabinet attaches directly to the back of the display.

### Wireless Management

Without leaving the vehicle or touching the sign:

- program settings
- adjust radar
- check battery
- download data



### 10 Second Install

Quickly attach or remove your sign from a mounting plate for unsurpassed simplicity. (Mount multiple plates around town to simplify moving your signs.)

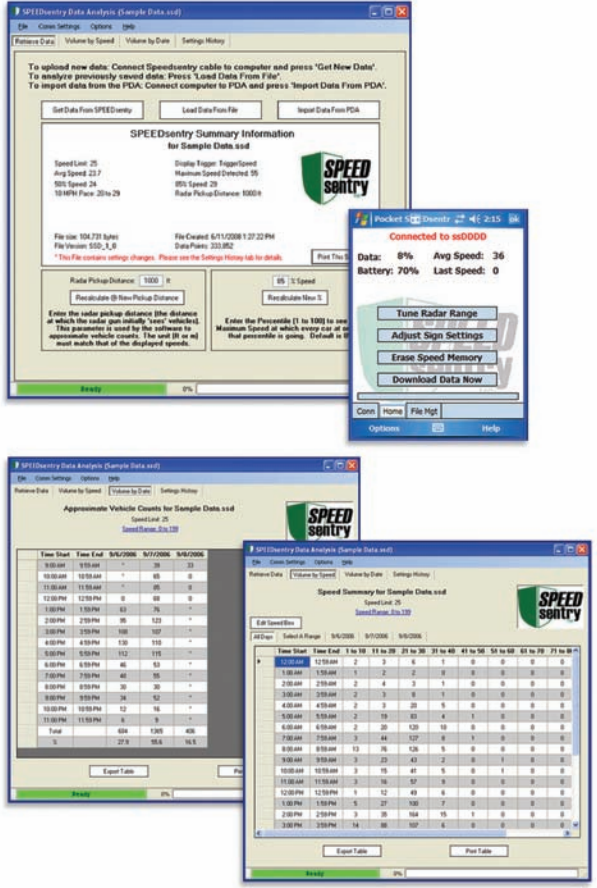
### Stealth Mode

Turn off the digits and remove the "Your Speed" sign, and this unobtrusive box will collect true, unaffected traffic patterns, before or after your traffic calming efforts.

# All Traffic Solutions

For a comprehensive product & feature tour, visit [www.alltrafficsolutions.com](http://www.alltrafficsolutions.com).

**Safety Made Simple!**



## SPEEDsentry® Shield: Software

**Powerful Data:** Easily download and review the days and times you want in the speed bins you choose.

**One Page Summary:** All key performance data within the data file is presented on one screen.

**Volume Analysis:** Identify peak travel times and trends in addition to speed.

**Easy Export:** Use Excel or any other spreadsheet program for more detailed charts and graphs to suit your needs.

**Prioritize:** See the days and times with the worst violations. Determine when and if a problem exists.

**Identify Individuals:** Isolate individual speed events to reveal a pattern, allowing very targeted enforcement.

**Review Settings:** Different settings result in different behaviors. Review the settings history to ensure reports are based on the appropriate days.



## SPEEDsentry® Shield: Mounting & Power

**Simple Mounting:** The same display can be mounted to U-channel, square channel, any size round pole, trailer or hitch-mount using bolts or bands. The leveling swivel even lets you bolt to often less-than-vertical existing street signs.

**Internal Power Source:** The battery/AC supply is self-contained within the sign, so there is no need for an external cabinet.

**AC Supply:** From simple surge protection to isolation transformers, we can accommodate your needs.

**Solar Assist:** Available in approximately 20W, 60W or 120W capacities to fit the power needs of your configuration and location.

